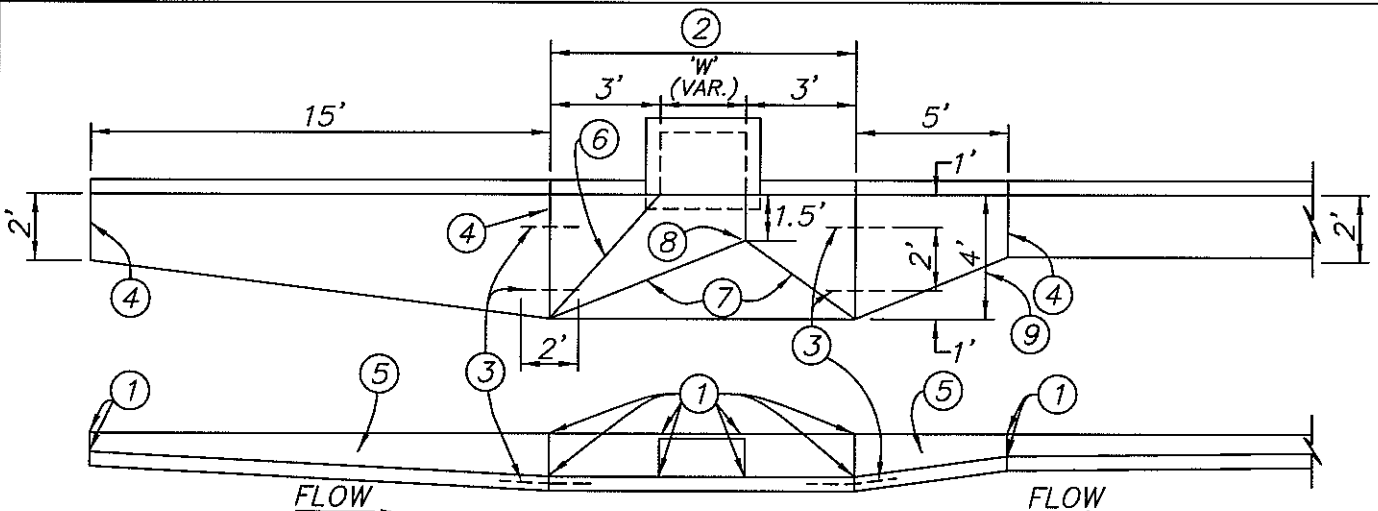


LOCAL DEPRESSION, SUMP COND.



**LOCAL DEPRESSION, INTERCEPT COND.
(FLOW-BY)**

NOTES:

- ① INDICATE TOP OF CURB AND FLOW LINE ELEVATIONS ON PLANS.
- ② SEE STD. PLAN 301 FOR CATCH BASIN DETAILS.
- ③ INSTALL 2 - 1/2" DIA. SMOOTH BARS, 2' LONG, PER TYPICAL DIMENSIONS ABOVE.
- ④ PROVIDE WEAKENED PLANE OR QUICK JOINT.
- ⑤ CURB HEIGHT VARIES.
- ⑥ STRAIGHT GRADE FLOW LINE.
- ⑦ STRAIGHT GRADE RIDGE.
- ⑧ ELEVATION = FL ELEVATION + 2".
- ⑨ REDUCE TO 2' UPON APPROVAL OF THE CITY ENGINEER WHERE BIKE LANES ARE PRESENT.

APPROVED:

[Signature]
CITY ENGINEER

CITY OF HUNTINGTON BEACH

DEPARTMENT OF PUBLIC WORKS



**APRON TRANSITION -
CATCH BASIN**

STANDARD PLAN
302
1 of 1

REVISION DATE: May 2008